



# Welcome to Kindergarten!

Beech Tree Elementary School



# The Kindergarten Team



**Abigail Parsons**  
Enhanced Autism Teacher  
for Kindergarten



## KINDERGARTEN TEAM

Melissa Garvic, Kelly Settel, Maya Good,  
Fatemeh Ordoubadi Nia, Stephanie Harvey &  
Chouay, Hind

# Administration



# About Beech Tree Elementary

- Title I School
- Fairfax Early Childhood Program (FECEP)
- Enhanced Autism (Kindergarten-5th grade)
- English as a Second Language (ESOL)
- Special Education
- Advanced Academic Program (AAP)
- Foreign Language in Elementary Schools (FLES- Arabic)
- Science, Technology, Engineering, and Math class (STEM)
- Instructional Coaches (Embedded professional development)



# Typical Day in Kindergarten

- Arrival and breakfast in the classroom
- Whole group Morning Meeting as a part of Responsive Classroom
- Language Arts block
  - Word Study to build phonological awareness
  - Reading and Writing Focus lessons
  - Stations (word work, writing, technology (iPads), hands on activity)
  - Small groups
- Lunch
- 1st Recess and quiet time
- Calendar and Number Sense
- Math
  - Focus lesson
  - Stations (technology, skill practice, skill review)
- Specials
- 2nd Recess
- Social Studies or Science
- Snack Time
- Teacher choice enrichment- Positivity Project, read aloud, structured play time
- Dismissal

# Morning Meeting

Responsive Classroom Model and Morning Meetings build community within our classes

- Greeting
- Share
- Activity
- Message





# Morning Meeting



# Language Arts

- Daily emphasis on Phonological Awareness
- Language Comprehension Focus Lesson
- Literacy Stations: Technology, Reading, Work on Writing, and Word Work
- Small groups for targeted instruction



Students on LEXIA learning app





# Language Arts



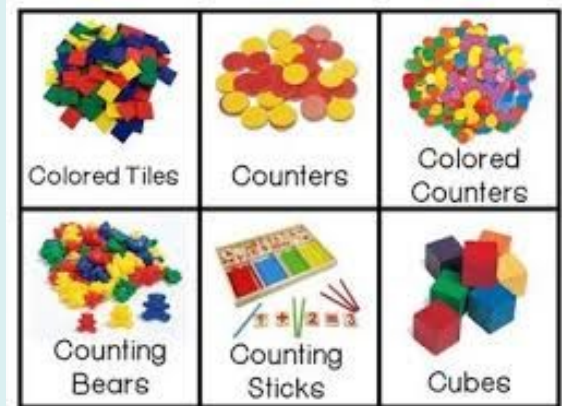
Ms. Harvey teaching letter sounds



Ms. Garvic's shared writing on the carpet

# Math

- Number Talks
- Math Focus Lessons
- Math Workshop: ST Math, Manipulative Based Learning, Problem Solving, Math games, Intervention and Enrichment
- Guided Math
- Use of technology in classroom






# Math





# Recess and Quiet Time



- 30 Minutes Daily Outside 
  - Upper field, black top sensory playground, and little playground
- \*Unless inclement weather, indoor play time
- 10 minutes of quiet time after recess to prepare for learning



# Specials Classes



- ★ Music with Mr. Skrtic
- ★ P.E. with Mr. Jenkins
- ★ Arabic with Ms. Bacha
- ★ Art with Mr. Skrtic
- ★ Library with Ms. Britton
- ★ Guidance with Ms. Adams
- ★ STEM with Ms. Simon



Students making windmills in STEM



# ★ Specials



# Office Staff



Sheila Hudson  
Stella O'Brien  
Sandra Merino  
Esther Baca  
Laura Rozier



# Wellness Team



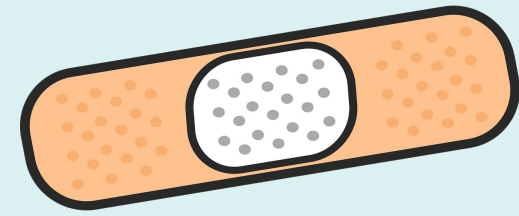
Stephanie Barnes:  
School Psychologist



Yolanda Adams:  
School Counselor



# Clinic



★ **Tamie Thadi, Clinic Aide**

# Beech Tree's Amazing Custodial Staff



# Beech Tree PTA

## PTA Events

- ★ PTA Membership \$10.00
- ★ Restaurant Nights
- ★ After school events
- ★ Fundraisers

**Presidents:** Megan Laboy &  
Penny Yiannarakis

**Contact:**

PTABeechTree@gmail.com



# For more information...

- ★ FCPS Website
  - [www.fcps.edu](http://www.fcps.edu)
- ★ Beech Tree Website
  - [www.fcps.edu/BeechTreeES](http://www.fcps.edu/BeechTreeES)



**Questions?**

